

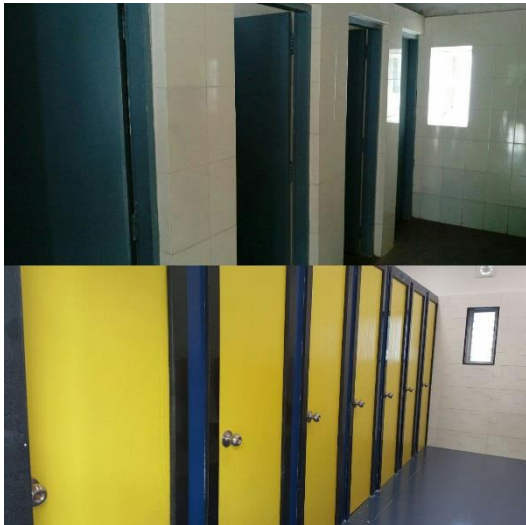
**Pilot project to commence major uplift & upgrade for 150 year Old School**  
**Pool in capital, ideas, & teamwork to provide cost effective solution**  
**Guided by the Principals & Vice-principals , supported by the board & executed by the parents committee**



# Project for upgradation of hygiene & sanitation at St. Mary's School, Camp Pune.

Details : Major upgrade of toilet blocks for school students (before & after photos)

The Parent Committee came together to assist the management in planning and executing the upgrades and working together helped in ensuring optimal outcomes.



# Scope & Execution

- A single toilet block in boys prep section upgraded to accommodate 6 western wall hung toilets, 1 Indian style commode and 9 urinals along with 3 wash basins.
- All inclusive cost of 9,41,380 rupees inclusive of all taxes. This consisted of materials of 6,48,780 and labour and contract element of 2,92,600.

## Considerations and solutions:

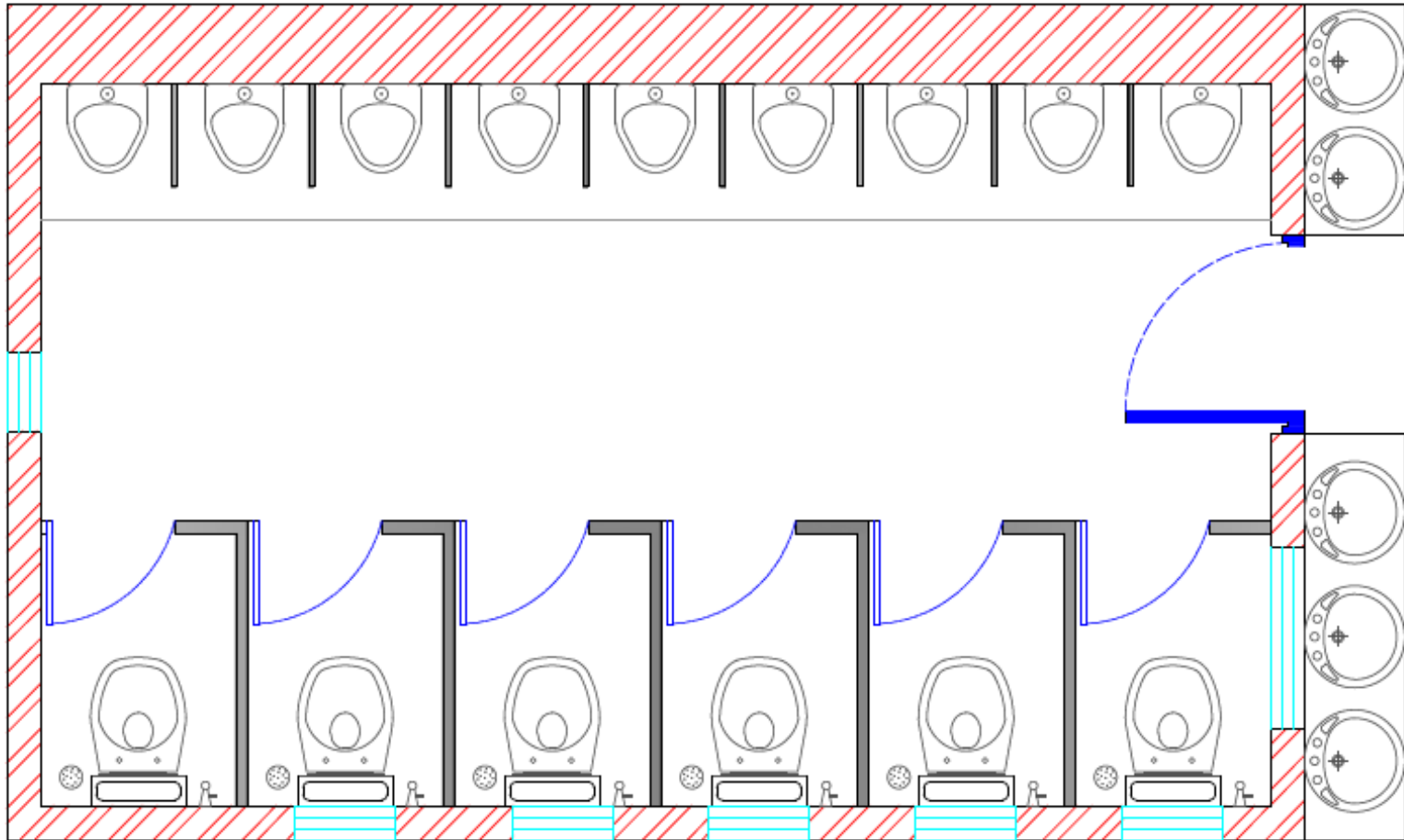
- Reputed brands of sanitary fittings and fixtures with good quality and of robust design and warranties (10 years) installed.
  - Current set of Indian style toilets changed to western commodes from Jaguar with hands free auto flushing system with flexible health faucet/wash tap.
  - Urinals with hands free auto flushing system (Jaguar brand) and partitions installed in Boys section to optimize space and prevent significant queues during periods of peak use.
  - Suitable Ventilation arrangement and high speed exhaust fans can be installed
  - Better LED Lights installed in bathrooms along with under counter wash basins, new roofing and windows with frosted glass installed.
  - Effective cleaning, sanitizing & disinfecting schedule shall be evolved and implemented.
  - Student to amenities ratio improved to handle peak usage.
  - Design issues, feasibility studies, sourcing of material and contracting wide quotation from multiple vendors and negotiations under tight cost control attained.
  - Extensive water proofing work was done to ensure absence of leakages and that the school will not have to look into that aspect again at a later date.
  - Execution completed without disturbing school operations in time bound manner.
  - Suitable payment mechanism with recourse to retention money and advances used to ensure optimal outcome for school.
- 
- Phase II in summer vacation shall aspire to complete upgrade of all toilet blocks, urinals and sanitation areas of all school sections and buildings along with new drinking water facility to curb usage of water bottles and reduce bag burden.

## General Design Issues

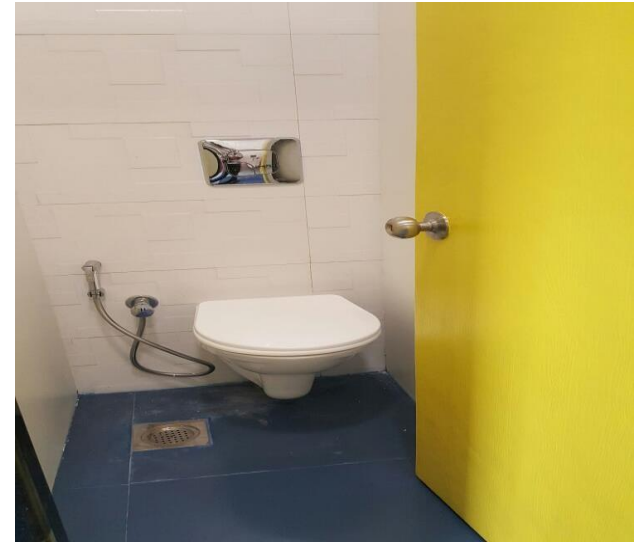
- Toilets have a 'light flush' and a 'full flush'.
- Previous pipe lines were as per Indian Commode style designed. Plumbing has been redone as per wall hung western commode and also to create enough space within the cubical.
- Toughened Glass partition used for safety.
- Suitable Ventilation arrangement and high speed exhaust fans installed along with a window in aluminium section.
- Current water supply design had an air trap problem. Problem was eliminated with a suitable air release arrangement in the overhead tank of the hostel building.
- Toilets and fittings are the right size and height for the learners expected to use them (size and height of toilets, basins, urinals, etc.). Hand washing and sanitation facility must respect children height and size.
- Toilet area walls, floors, ceilings, doors, etc. are of a type that are impervious/non-absorbent and washable, easy to clean, and capable of withstanding disinfection and other cleaning processes.
- Crucial wall between the toilet block and adjacent IT lab and all the other walls have been waterproofed to a height up to one foot to eliminate water leakage/seepage.



From the drawing board .....



**To reality in 45 days without impacting school functioning**



## **Successful pilot led to series of additional projects**

### **Projects**

- Landscaping around chapel area
- Painting of parts of the chapel
- Illumination of School for functions
- Fund raise appeal to parents to supplement the school resources

### **Outcomes**

- Suitable drainage to prevent leakages and flooding
- Maintenance and renovation of premises
- Ongoing exercise to ensure schools inclusive excellence drive of the school.

## Installation of School Signage & Logos





## Uplift of Chapel Area: Painting & landscape upgrade





# Illumination of School for 150th Year Special Church Service





## General purpose cleaning and maintenance





## Results

- The purpose of upgrading towards modern amenities with accountability towards various stakeholders (students, parents and donors ) attained.
- Resources and management bandwidth optimized by coordination and team work via Management /Parents participation route.
- Lays foundation for the future generation of school students for next 150 years & Beyond.

